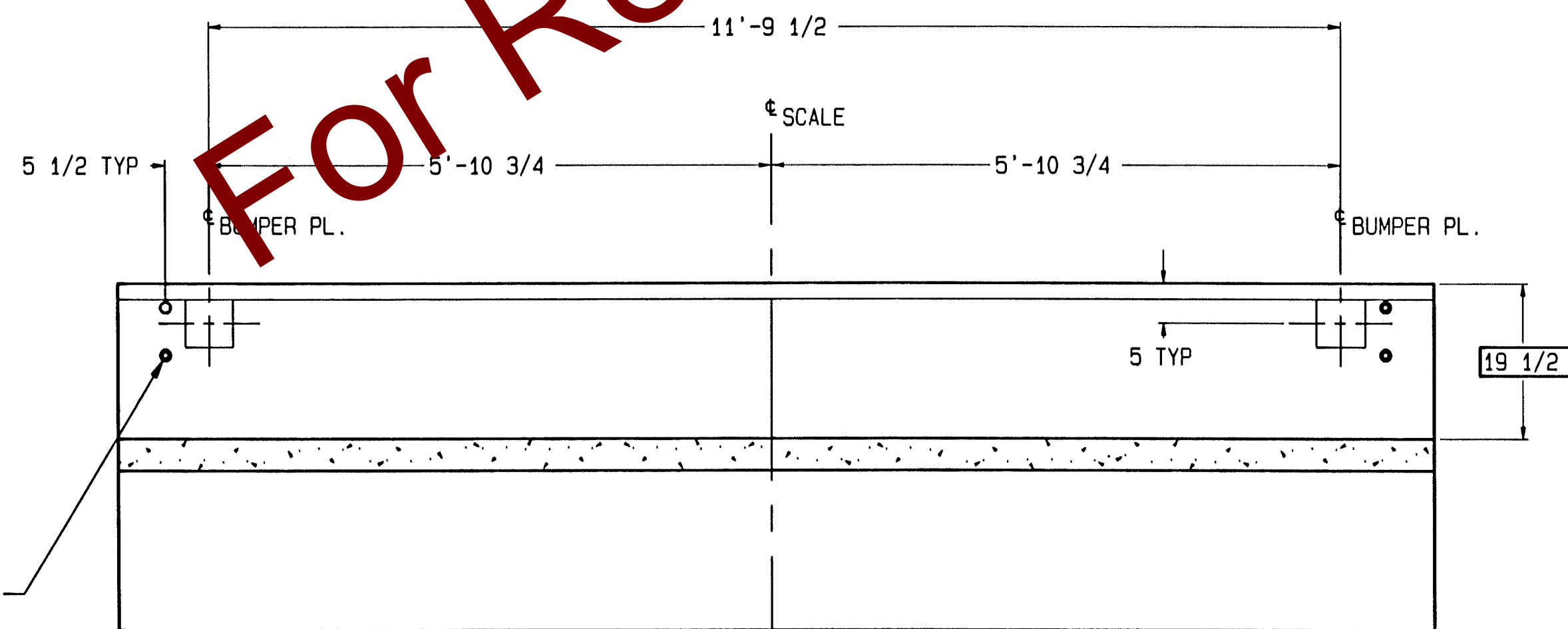
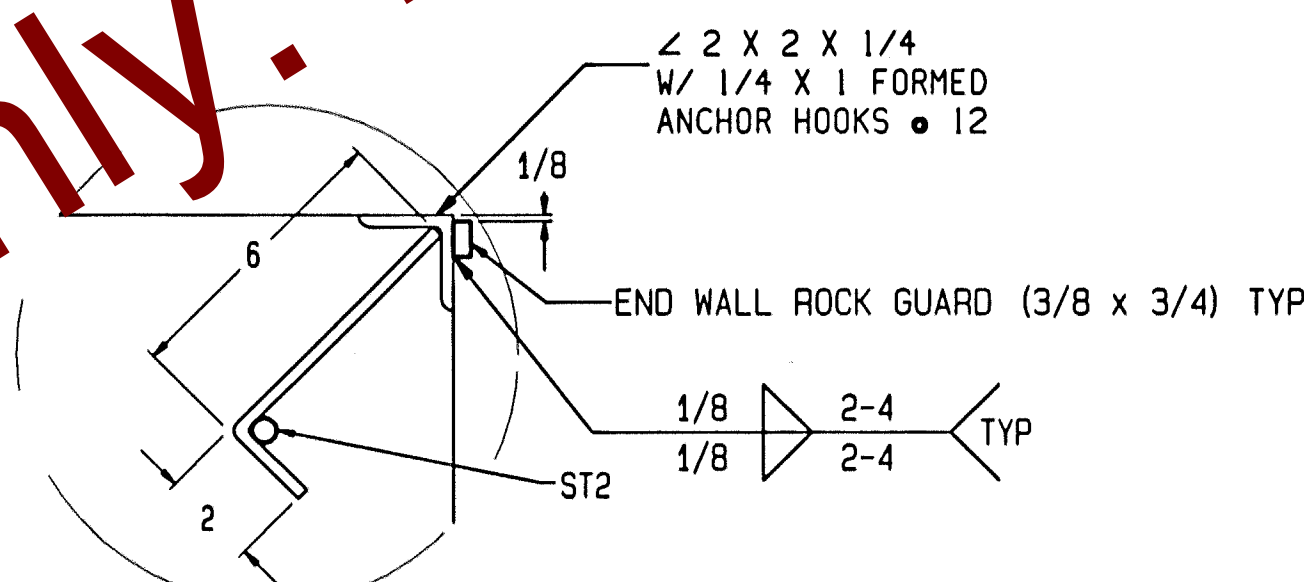


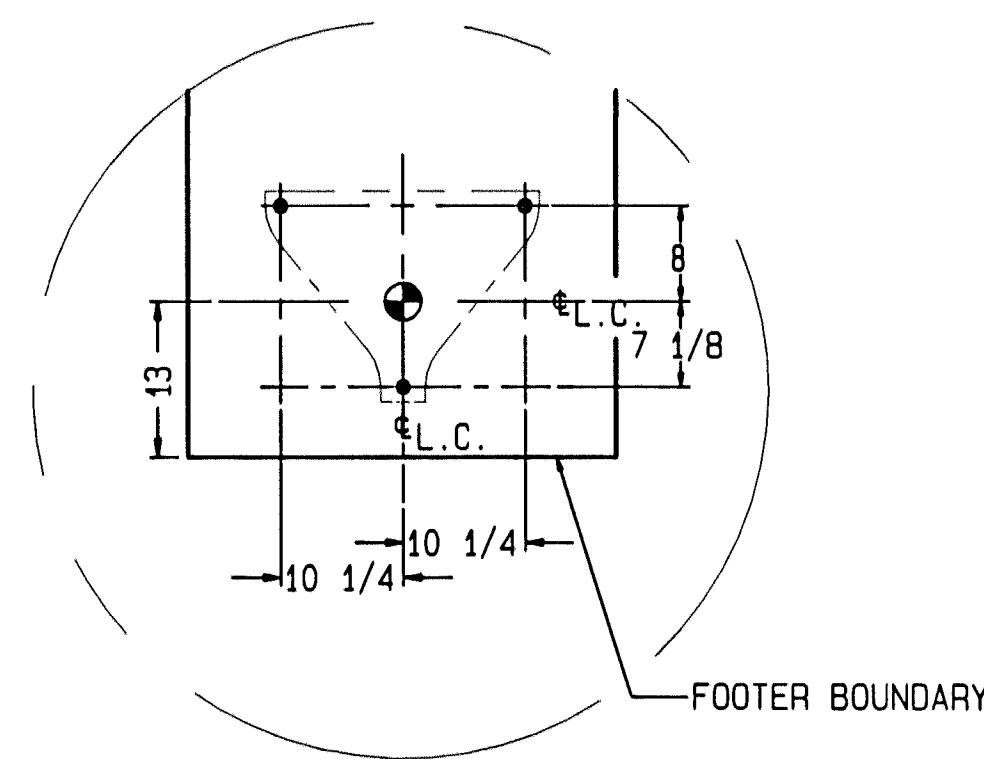
(SCALE: 1:8)  
BUMPER PLATE ASSY'S: TWO EACH END,  
MATERIAL: H.R. STEEL  
SEE NOTE 10



(SCALE: 1:16)  
BUMPER PLATE PLACEMENT

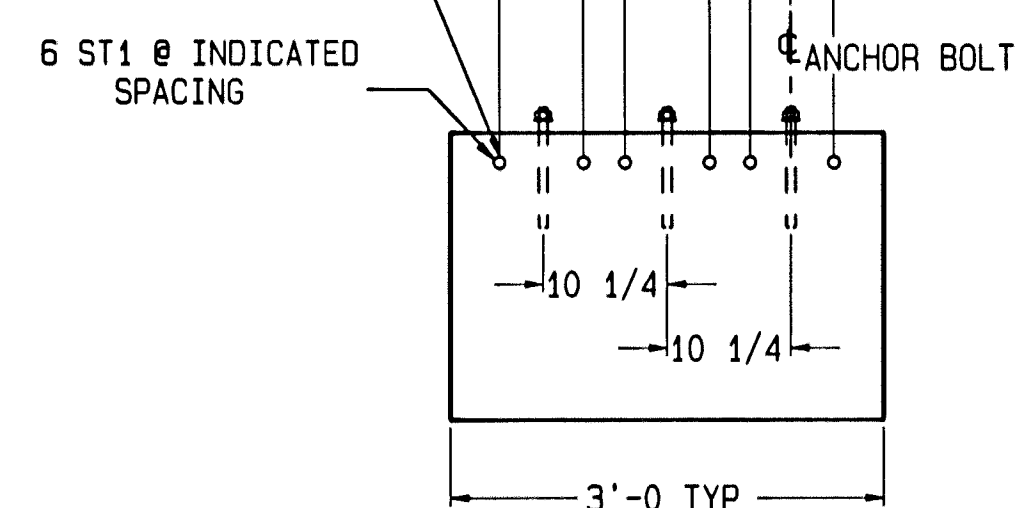


(SCALE: 1:4)  
SEE NOTE 10



(SCALE: 1:16)  
ANCHOR BOLT PLACEMENT  
(OTHER SIDE IS OPPOSITE)  
SEE NOTE 6

SPACE REBAR TO AVOID EXPANSION BOLTS: TYPICAL ALL BASEPLATE AND LATERAL BUMPER LOCATIONS. (BOLTS SHOWN FOR REFERENCE ONLY)



(SCALE: 1:16)  
FOOTER ANCHOR BOLT PLACEMENT

SYM	QTY	SIZE	LOCATION, DIRECTION	LENGTH	WGT
ST1	24	#6	FOOTERS, LATERAL	13'-2	475
ST2	22	#5	APPROACHES, LATERAL	13'-2	303
ST3	28	#5	APPROACHES, LONG.	9'-6	278
L1	28	#5	APPROACH TO FOOTER	2'-0x2'-0	117
TOTAL					1173

MATERIAL SUMMARY *	FOOTER DEPTH: "X" INCHES (24 INCH MINIMUM)				
	24	36	48	60	72
CONCRETE (CU. YD.)	28	37	45	52	62
REINFORCING STEEL (LB)	1173				

FOR OPTIONAL 4" CONCRETE WASHOUT SLAB ADD:  
WWF 6x6\_M1.4xM1.4 - 825 SQ. FT.  
CONCRETE - 10 CU. YD.  
1/2" EXPANSION JOINT - 140 FT.

\* REFER TO SCALE GENERAL LAYOUT DRAWING FOR  
DECK CONCRETE AND REINFORCING STEEL SPECIFICATIONS.

#### NOTES:

- 1) USE MINIMUM 3000 PSI STRENGTH CONCRETE AT 28 DAYS WITH 5-7% AIR ENTRAINMENT.
- 2) USE MINIMUM 60KSI YIELD DEFORMED REINFORCING STEEL.
- 3) FOUNDATION REQUIRES 2500 PSF RATED SOIL.
- 4) TOP OF CONCRETE AT BASEPLATE LOCATIONS TO BE LEVEL AND IN ONE PLANE  $\pm 1/8"$ .
- 5) DIAGONAL MEASUREMENTS, ENDWALL TO ENDWALL, MUST BE EQUAL WITHIN  $1/2"$ .
- 6) BASEPLATE AND LATERAL BUMPER ANCHORS SUPPLIED BY METTLER TOLEDO. USE BASEPLATES AND LATERAL BUMPERS AS TEMPLATES TO LOCATE EXPANSION BOLTS DURING SCALE INSTALLATION.
- 7) RAMP LENGTH: -PER LOCAL REGULATIONS  
-1/2" SLOPE PER FOOT TYPICAL
- 8) OPTIONAL: 6" OF GRAVEL MAY BE USED UNDER APPROACHES TO IMPROVE DRAINAGE.
- 9) MINIMUM DEPTH OF COVER FROM THE SURFACE FOR REBAR IS 2". HOWEVER IN PLACES WHERE THE SURFACE IS IN CONTACT WITH THE GROUND, THE REBAR COVER SHOULD BE 3".
- 10) CONTRACTOR SUPPLIES:
  - EXCAVATION
  - CONCRETE AND FORMS
  - REINFORCING STEEL
  - 1 1/2" DIA CONDUIT
  - CURB ANGLE ASSEMBLIES (DETAIL G)
  - BUMPER PLATE ASSEMBLIES (VIEWS C-C & D-D)
  - END WALL ROCK GUARD (DETAIL G)
  - 6" SCH. 40 PIPE.

REV	CHANGE	BY	DATE	SCALE	1/50
A	UPDATED REBAR QUANTITIES	JEB	10/7/98	DATE	9/29/98
				DRN	JEB
				APPD	
TITLE 7531KD FOUNDATION VARIABLE FOOTER 70'x11'					
UNLESS OTHERWISE SPECIFIED, ALL DIMENSIONS ARE IN INCHES, AND DIMENSIONAL TOLERANCES ARE:				THIS PRINT IS FURNISHED WITH THE UNDERSTANDING THAT THE ESSENCE THEREOF WILL NOT BE REPRODUCED IN WHOLE OR IN PART WITHOUT WRITTEN AUTHORIZATION OF METTLER-TOLEDO, INC. ALL DESIGNS ARE THE PROPERTY OF METTLER-TOLEDO, INC. AND WILL BE PROTECTED BY PATENTS.	
FRACTIONAL		XX	±.02	ANGULAR	±.5°
1/32		XXX	±.005		
TC203648					REV A